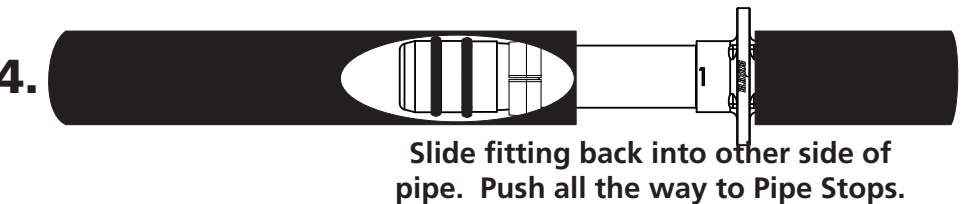
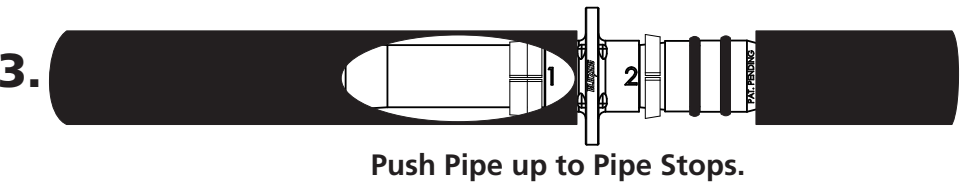
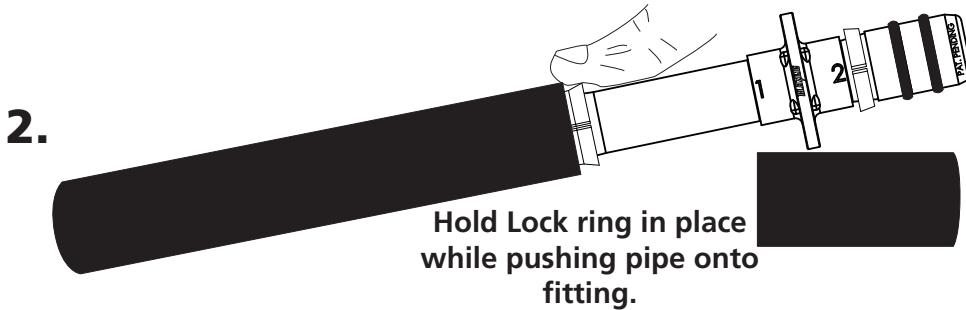
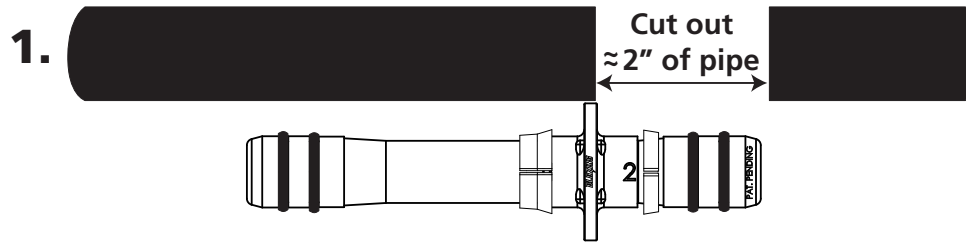
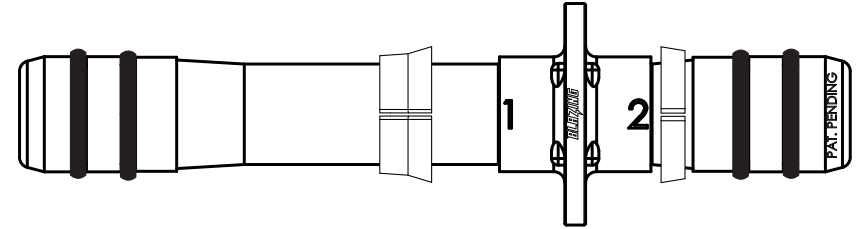
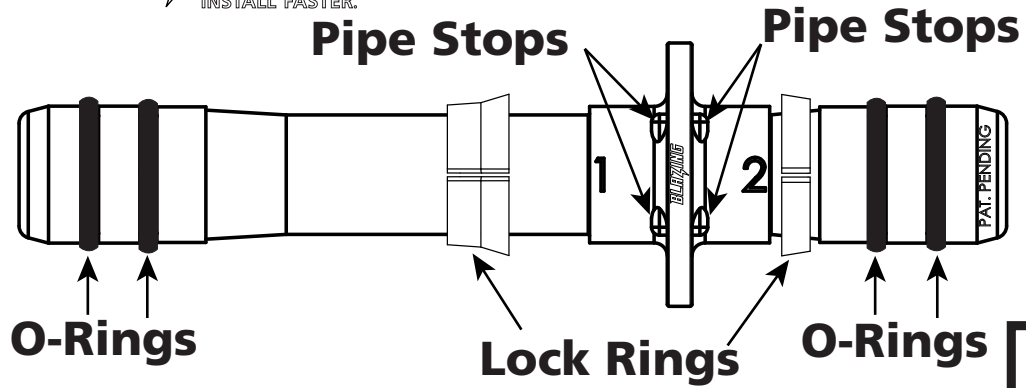


BLZ PSC-010

1" Poly Slide Coupler



- For use on 1" 80# or 100# NSF polyethylene pipe
- Over 400 PSI without a leak. Pipe will burst first.
- Withstands repeated freeze/thaw cycles and ground shift & sheering
- Made of high grade ABS material
- Reuseable if ALL O-Rings and Lock Rings are replaced.

Dimensions:

- 1. Outer Diameter:** 26.42 mm (1.04 inches)
- 2. Interior Diameter:** 19.43 mm (.765 inches)
- 3. Length:** 190.5 mm (7.5 inches)
- 4. End To Pipe Stops (short side):** 57.65 mm (2.27 inches)
- 5. End To Pipe Stops (long side):** 121.92 mm (4.8 inches)

